



# SOFITEL ISTANBUL TAKSIM



SOFITEL  
HOTELS & RESORTS



# SOFITEL ISTANBUL TAKSIM



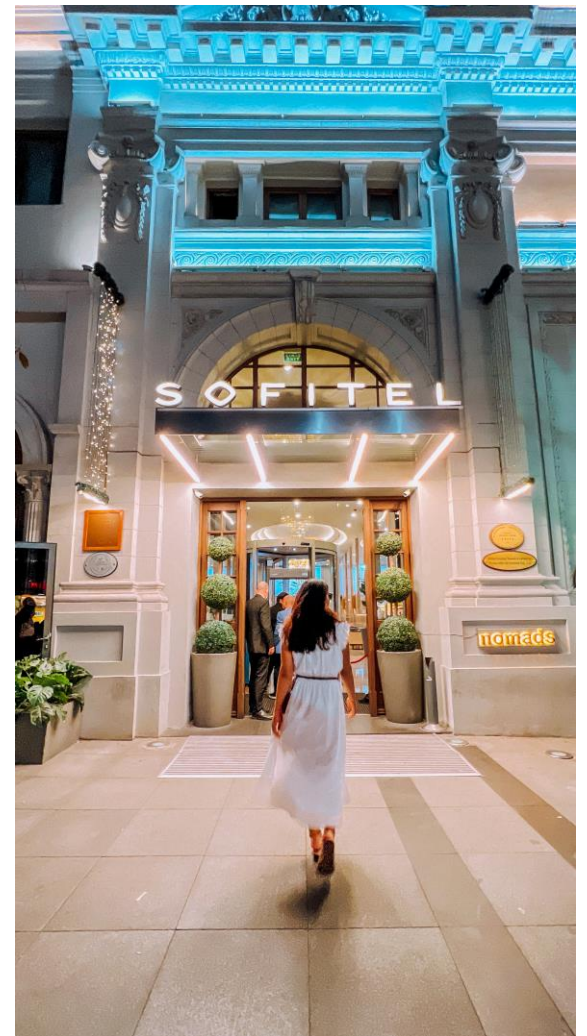
# WELCOME TO SOFITEL ISTANBUL TAKSIM

Live the French luxury  
in the world's most exciting city

Founded in the location of a historical theatre and music hall from the 70s, Sofitel Istanbul Taksim sits in the heart of the city, with unique views of Taksim Square and the mesmerizing Bosphorus.

As past and present converge in unique settings, we welcome you to discover Turkey from the comfort of a 5-star hotel with sea view rooms and suites, an authentic Spa, impeccable dining options including a rooftop bar and a business-ready Club Millesime.

Stay in central Istanbul and dare to explore the finer site of sophistication where refined European heritage blends with Turkish culture.



# SOFITEL ISTANBUL TAKSIM AT A GLANCE

- Located in the heart of the city center Taksim Square offering a walking distance discovery to the local culture with an expansive range of shopping, dining and entertainment venues
- 30 minutes' drive to Istanbul Airport and 15 minutes' drive to the Old Town of the city where St. Sophia, Blue Mosque, Basilica Cistern and Topkapı Palace are located
- 202 chic guestrooms including 33 suites overlooking the expansive views of Taksim Square and Bosphorus strait, one of the world's most strategic waterways and a popular Istanbul landmark
- State-of-the-art meeting & event facilities expanded on 1800 sqm area with two spectacular Ballrooms and 4 meeting rooms
- Enticing dining options with two restaurants and a rooftop bar offering local and Italian tastes
- Sofitel Spa promises exhilarating and rejuvenating treatments inspired by traditional Turkish rituals with natural glow of Valmont products



PRIME LOCATION



## SOFITEL ISTANBUL TAKSIM LOCATION



- Located in the heart of the city center Taksim Square
- 30 minutes' drive to Istanbul Airport
- 5 minutes' drive to the Bosphorus Strait
- 5 minutes' drive to popular shopping and dining district Nisantasi
- 15 minutes' drive to Eminonu, Old Town of the city, where St. Sophia, Blue Mosque, Basilica Cistern and Topkapı Palace are placed



# ROOMS & SUITES



# SUPERIOR CITY ROOMS

Superior City King and Twin rooms are generously sized at 35 sqm and offer an exquisite design with relaxed atmosphere. Each room has supremely comfortable beds, a marble-tiled bathroom with Atelier cologne amenities

## *Room Features*

- *LED TV • High speed WiFi • Luxury Bathroom Amenities • Air Conditioning • Safe • Minibar • Desk • In-room Coffee & Tea facilities*





# LUXURY ROOMS WITH TAKSIM SQUARE VIEW

These luxurious, light-flooded rooms have a contemporary residential ambiance. Offering the panoramic views of the Taksim Square city center, they are ample of 35 sqm featuring stylish furnishings

## ***Room Features***

- *LED TV* • *High speed WiFi* • *Luxury Bathroom Amenities* • *Air Conditioning* • *Safe* • *Minibar* • *Desk* • *In-room Coffee & Tea facilities*



# LUXURY ROOMS WITH BOSPHORUS VIEW

Panoramic views of the Bosphorus are offered through the floor-to-ceiling windows of these luxurious rooms. They feature comfortable king or twin beds, large work desk and ergonomic chair and are ample of 35 sqm

## *Room Features*

- LED TV • High speed WiFi • Luxury Bathroom Amenities • Air Conditioning
- Safe • Minibar • Desk • In-room Coffee & Tea facilities

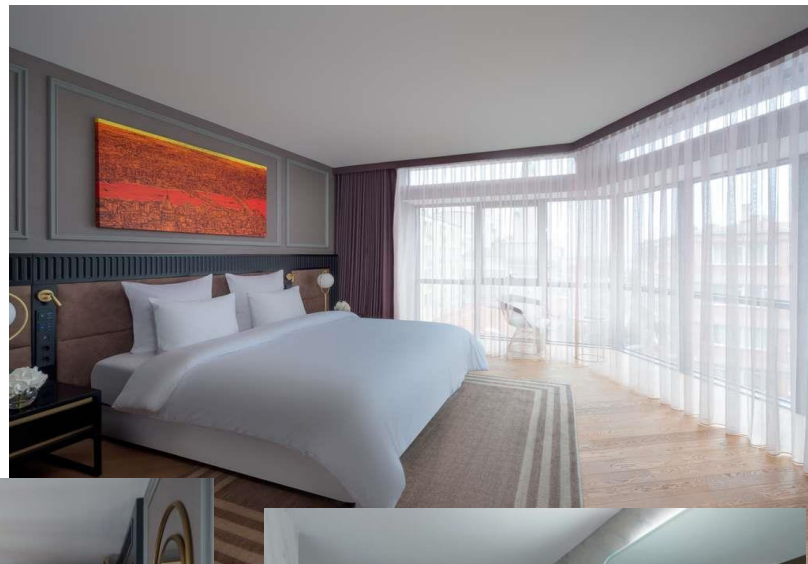


# JUNIOR SUITE WITH PARTIAL BOSPHORUS VIEW

These bright Junior Suites feature a soothing color palette evoking a temporary yet classic atmosphere in 66 sqm space with a relaxing living area. Enjoying partial Bosphorus views, they offer access to the Club *Millésime Lounge*

## *Room Features*

- LED TV • High speed WiFi • Lanvin Bathroom Amenities • Air Conditioning • Safe • Minibar • Desk • In-room Coffee & Tea facilities • Club *Millésime Lounge*

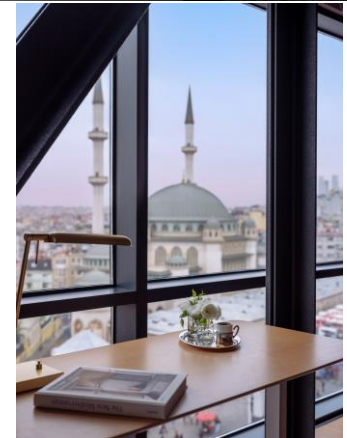


# JUNIOR SUITE WITH TAKSIM SQUARE VIEW

These 66 sqm suites enjoy stunning views over the city with a contemporary design featuring separate areas for living and sleeping and a Spa like bathroom with Lanvin bath amenities. These suites enjoy access to the Club *Millésime Lounge*

## **Room Features**

- LED TV • High speed WiFi • Lanvin Bathroom Amenities • Air Conditioning
- Safe • Minibar • Desk • In-room Coffee & Tea facilities • Club *Millésime Lounge*



# PRESTIGE ONE BEDROOM SUITE WITH CITY VIEW

Enjoying the restful city views, these suites exude a modern feel with elegantly designed furnishings and the artworks created by Devrim Erbil in 60 sqm setting. These elegant suites provide extra space for complete comfort with spacious separate living and sleeping areas

## *Room Features*

- LED TV • High speed WiFi • Lanvin Bathroom Amenities • Air Conditioning
- Safe • Minibar • Desk • In-room Coffee & Tea facilities • Club Millésime Lounge



# PRESTIGE ONE BEDROOM SUITE WITH BOSPHORUS VIEW

Enjoying the tranquil views of the Bosphorus, these prestigious suites are an ample of 60 sqm and offer a perfect blend of contemporary comfort and timeless charm with generously sized sleeping and living areas in different rooms accompanied by sumptuous bathrooms

## *Room Features*

- *LED TV • High speed WiFi • Lanvin Bathroom Amenities • Air Conditioning*
- *Safe • Minibar • Desk • In-room Coffee & Tea facilities • Club Millésime Lounge*



# SIGNATURE SUITE WITH BOSPHORUS VIEW & TERRACE

Imagine waking up to a view of the world's best scene Bosphorus. The aptly-named Signature Suites are a super-luxury take on imperial tradition with separate rooms for living ,exquisite bathroom and a private terrace in 88 sqm setting.

## *Room Features*

- LED TV • High speed WiFi • Lanvin Bathroom Amenities • Air Conditioning • Safe • Minibar • Desk • In-room Coffee & Tea facilities • Club Millésime Lounge



# IMPERIAL SUITE

This palatial suite is the last word in luxury with the views of stunning Bosphorus. The 133 sqm suite offers a separate area for hosting dinner, a relaxing living space, two spacious bedrooms and a marble bath with Lanvin amenities

## *Room Features*

- LED TV • High speed WiFi • Lanvin Bathroom Amenities • Air Conditioning • Safe • Minibar • Desk • In-room Coffee & Tea facilities • Club Millésime Lounge





# MEETING & EVENTS



## MEETING & EVENTS

Sofitel Istanbul Taksim is equipped to host business and social events of all kinds with two elegant Ballrooms and four well outfitted meeting rooms spanned in 1800 sqm



MAJIK BALLROOM



OPERA BALLROOM





*BEYOGLU*



*HARBIYE*



*ÇIHANGİR*



*KARAKOY*

<b>B1 FLOOR</b>									
AREA	Floor Space (m <sup>2</sup> )	Height (m)	Theatre	Classroom	Banquet	Cabaret	U - Shape	Hollow Square	Coctail
OPERA HALL	432	4,5	520	195	300	180	110	112	420
OPERA HALL FOYER ENTRANCE	49	6	-	-	-	-	-	-	40
OPERA HALL FOYER	113	4	-	-	-	-	-	-	150
<b>B3 FLOOR</b>									
AREA	Floor Space (m <sup>2</sup> )	Height (m)	Theahre	Classroom	Banquet	Cabaret	U - Shape	Hollow Square	Coctail
MAJIK HALL	535	4,5	700	230	400	240	120	138	574
MAJIK BALLROOM FOYER	286	3	-	-	-	-	-	-	254
BEYOĞLU	150	2,7	120	76	90	54	46	39	120
KARAKÖY	110	2,7	80	49	50	30	34	28	70
HARBIYE	86	2,7	60	40	50	30	30	22	45
ÇIHANGİR	54	3	30	24	40	18	17	14	40

MAGNIFIQUE  
MEETINGS



FOOD & BEVERAGE



# LA TABLE RESTAURANT

EXTENSIVE BUFFET BREAKFAST

EXPERIENCE IN DELICIOUSLY INNOVATIVE RENDITIONS OF TURKISH PRODUCE WITH INTERNATIONAL DELIGHTS



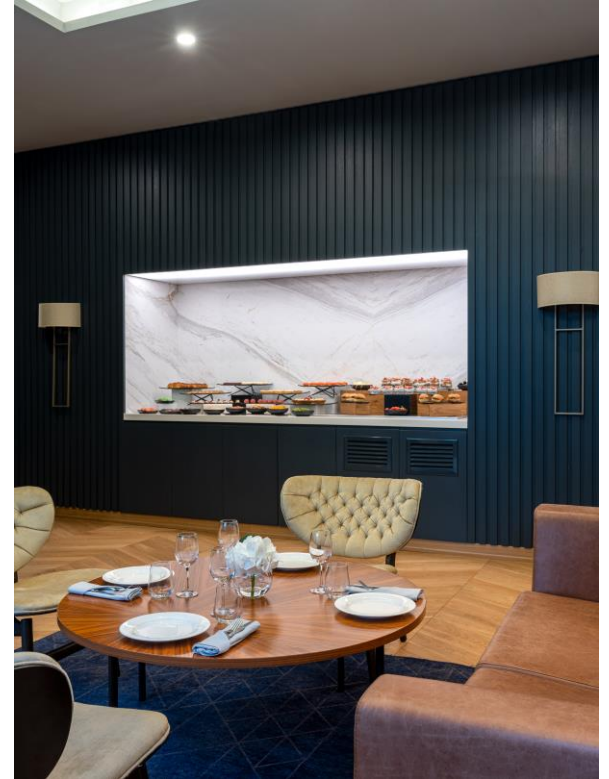
# THE OVEN BRASSERIE & TERRACE

EUROPEAN BRASSERIE OFFERING BREATHTAKING BOSPHORUS VIEWS BLENDED  
WITH TRENDY AND BESPOKE FLAVORS IN THE MOST CENTRAL LOCATION OF ISTANBUL



# CLUB MILLÉSIME

EXPERIENCE THE EXCLUSIVE PRIVILEGES WITH CLUB MILLÉSIME LOUNGE ACCESS





# NOMADS

ENJOY LOCAL TASTES WITH MEDITERRANEAN ENTERTAINMENT STYLE AT THE ROOF RESTAURANT OVERLOOKING BOSPHORUS



SOFITEL SPA



# WELL BEING & SPA



## SOFITEL SPA

*features 7 treatment rooms, a couple treatment room, sauna, steam room and traditional Turkish Hammam*



# WELL BEING & SPA



## SOFITEL SPA

*features an indoor swimming pool*



## SOFITEL FITNESS

*features a full range of state-of-the-art equipment*



S O F I T E L

ISTANBUL TAKSIM

